



THE LAGOS CHAMBER OF  
COMMERCE AND INDUSTRY

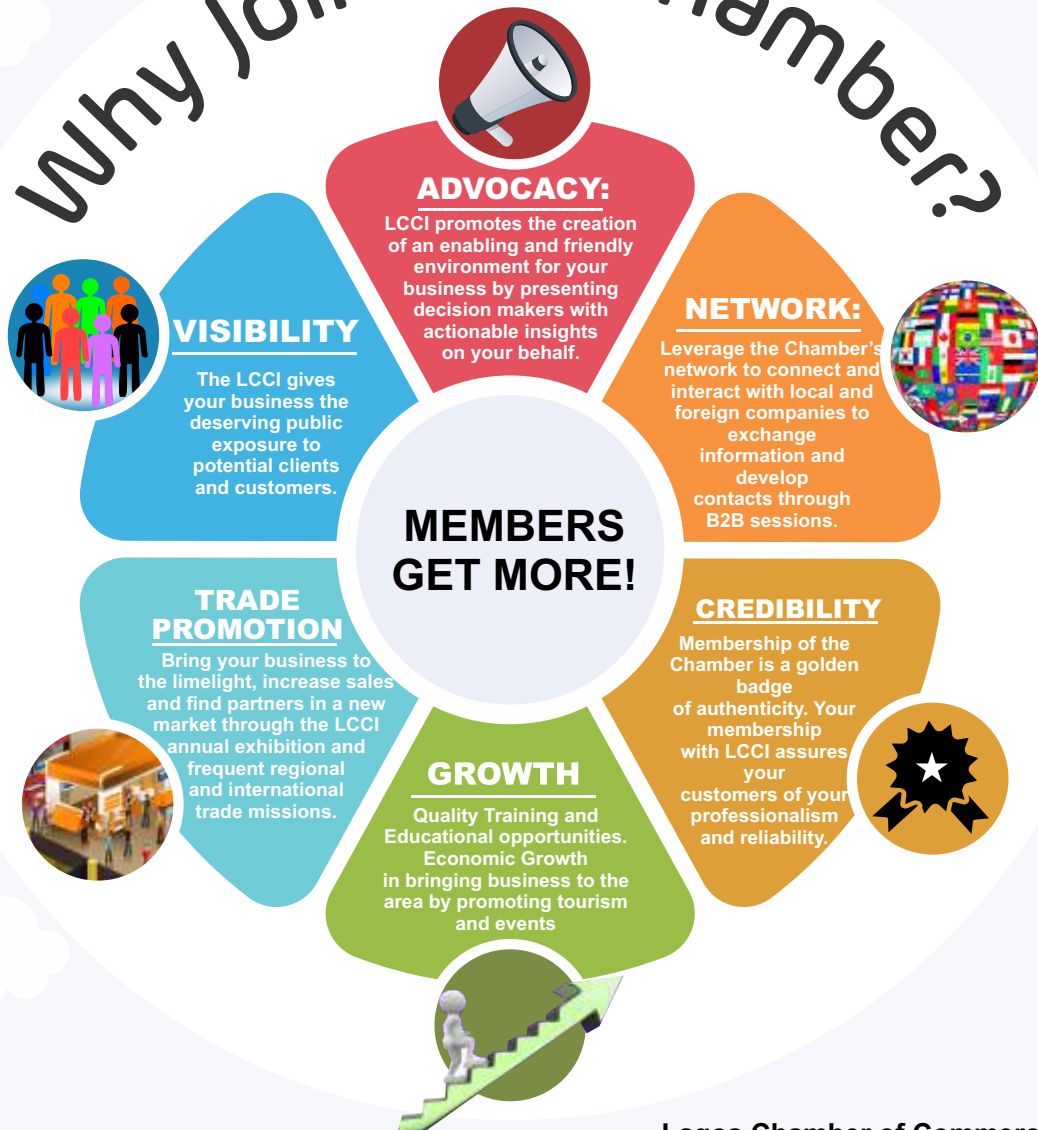








# JOIN LCCI TODAY!

*Let us help boost your business!* 

## Why Join the Chamber?



Social Media:  [www.facebook.com/lagoschamber](https://www.facebook.com/lagoschamber)  
 @LagosChamber  
 The Lagos Chamber of Commerce and Industry  
 <https://www.instagram.com/lagoschamber88/>



**Lagos Chamber of Commerce & Industry**  
Our Information & Contact  
Address: Commerce, 1, Idowu Taylor Street, V.I.  
Email: [membership@lagoschamber.com](mailto:membership@lagoschamber.com)  
GSM: 08092931081, 08188783081  
[www.lagoschamber.com](http://www.lagoschamber.com)

# Our Vision

"To be a leading Chamber in Africa, providing world-class services and supporting the development of a vibrant private sector."

## Our Core Values



**TEAMWORK**



**INNOVATION**



**EXCELLENCE**



**COLLABORATION**



**DIVERSITY & INCLUSION**



**INTEGRITY**

# Our Mission Statement

"To develop and grow an engaged membership and protect the interests of the Organised Private Sector through good governance, advocacy, enabling business opportunities, and providing business support services."

# Brief History

Founded in 1888, Lagos Chamber of Commerce and Industry is the Premier Chamber of Commerce in Nigeria and the most vibrant in West Africa. In 1950 it got incorporated as a non-profit making organization, Limited by Guarantee under the Companies Act of 1948.

It is the foremost private sector group in Nigeria with over 4,000 corporate members. It accounts for an estimated 60% of industrial output, 65% of general commerce and 75% of financial services in the country. The Lagos Chamber of Commerce and Industry is the first Chamber of Commerce in West Africa to be ISO certified and the second on the Continent of Africa.

The primary objective of the Chamber is to promote, support or oppose legislative or other measures affecting trade, industry, commerce and agriculture. The Chamber represents the opinion of the business community in particular, and the economy as a whole. Over the last century, LCCI has remained the authentic voice of the private sector through its sustained public policy advocacy, stakeholders' engagement and trade promotion activities.

# Past Presidents



**P. J. C. Thomas**  
1923- 1930



**Mr. E. C. W. Howard, OBE,**  
1955- 1960



**Sir. Francis Turton-Hart**  
1960- 1962



**Chief S. L. Edu, MFR,**  
1963- 1968



**Otunba J. Ade Tuyo, MFR, FNIM,**  
1968- 1970



**High Chief (Dr.) Henry Olodeye  
Fajemirokun, CON**  
1970-1975



**Chief A. O. Lawson, SAN, CON,**  
1975- 1980



**Chief J. Akin George, OFR,**  
1980- 1983



**Prof. Ayo Ogunsheye, OFR,**  
1983- 1987



**Alh. L. A. Salami**  
1987- 1991



**Mr. Oludayo Sonuga**  
1991- 1995



**Chief Kola Daisi, CON,**  
1995- 1998



**Chief (Mrs.) Margaret O.A.  
Young JP, OON**  
1999-2001



**Chief John A. Odeyemi, MFR, FCA.**  
2001- 2003



**Chief Olusola Faleye, FCA,**  
2003- 2005



**Dr. Herbert Ademola Ajayi, OON,**  
2005-2007



**Asiwaju S. K. Onafowokan, OON,**  
2007- 2009



**Otunba S. O. Deru, FCA, FNIM, JP**  
2009-2011



**Mr. Goodie M. Ibru, OON,**  
2011-2013



**Alh. Ismaila Aderemi Bello, FCA,**  
2013-2015



**Dr. Mrs. Nike Akande, CON**  
2015-2017



**Mr. Babatunde Paul  
Ruwase, FCA**  
2017-2019



**Mrs. Toki Mabogunje**  
2019-2021



**Asiwaju Dr Michael  
Olawale-Cole, CON**  
2021-2023



# Relations with Government



A delegation of the Lagos Chamber of Commerce and Industry and the Vice President of Nigeria, Kashim Shettima during a visit to Aso Rock Villa, Abuja.



A delegation of the Lagos Chamber of Commerce and Industry and the Lagos State Government during a visit to Lagos House, Marina.

The LCCI recognises the strategic importance of relations with Government in the pursuit of its advocacy mandate

# Our SERVICES

Since inception in 1888, the Lagos Chamber of Commerce and Industry, has been protecting and promoting the interests of its members and the business community at large through Public Policy Advocacy, Creation and Facilitation of Commercial and Industrial opportunities, as well as provision of business development services. These include; Engagement with Federal and State Governments and their Agencies, Business Advisory Services, Inward and Outward trade Missions, Trade Documentation Services, Trade Promotions, Arbitration Services and Economic Research and Development Services, etc.

# 1

## Engagement with Federal and State Governments and their Agencies



President & Chairman of Council, LCCI, Mr. Gabriel Idahosa, FCA and Vice President of Nigeria, Kashim Shettima during a Courtesy Visit by the Lagos Chamber of Commerce and Industry to the Federal Government at the Aso Rock Villa, Abuja



President & Chairman of Council, LCCI, Mr. Gabriel Idahosa, FCA and Lagos State Deputy Governor, Mr. Kadri Obafemi Hamzat during a Courtesy Visit by the Lagos Chamber of Commerce and Industry to the Lagos State Government at the Lagos State House in Marina, Lagos.



## 2

### International Affairs and Engagement with Diplomatic Community.



The Lagos Chamber of Commerce and Industry (LCCI) leadership as well as Lagos State Government Executives during 2024 Diplomatic luncheon with some diplomatic community members organised by the Chamber in Lagos.

3

## 2024 ICTEL EXPO PHOTO NEWS



# Give Your Brand Visibility



Our official website, [www.lagoschamber.com](http://www.lagoschamber.com) offers unique opportunities for your brands' visibility. With over **Ten Thousand (10,000)** visitors weekly ranging from business leaders to entrepreneurs within and outside Nigeria, wouldn't you advertise your products and services there?

For inquiries and advertisements, please reach us via

+234 8037726593,  
+234 8066319566,  
+234 8036127456,

or [communications@lagoschamber.com](mailto:communications@lagoschamber.com)



# 4

## Business Education Services & Training (BEST)- Vocational Training, Mentorship and Collaboration.



Director, Business Education Services and Training (BEST) Unit, Lagos Chamber of Commerce and Industry (LCCI) Dr. Taiwo Nolas-Alausa; Registrar, Lagos State University (LASU), Mr. Emmanuel Fanu; Deputy Chancellor-Administration, LASU, Prof. Adenike Boya; Director General, LCCI, Dr. Chinyere Almona; Vice Chancellor, LASU, Prof. Ibiyemi Ibilola Olatunji-Bello, mni; Deputy Vice Chancellor, Academics, LASU Prof. Elias Olukorede Wahab; Bursar, LASU, Mr. Babatunde Olayinka and Business Development manager, BEST Unit, LCCI during an Memorandum of Understanding between LASU and LCCI to provide Diploma and Postgraduate Diploma Programs in Entrepreneurship Studies.



L-R: Head, Public Sector, Providus Bank, Mrs Bunmi Godo; Director, Business Education Services and Training (BEST) Unit, Lagos Chamber of Commerce and Industry (LCCI), Dr Taiwo Nolas-Alausa; Head, Business Solution, Onajobi Seye; Director General, LCCI, Dr. Chinyere Almona, FCA; Head, Business Support, Lagos State Employment Trust Fund (LSETF), Eric-Sobukonla Oluwafunmilayo and Project Manager, Bank of Industry (BOI) Mr. Gbenga Igbede during the Mentoring Exhibition & Providus Bank day organised by the LCCI at LCCI Conference & Exhibition Centre, Alausa, Ikeja on 14th June, 2024.

# 5

## Advocacy Engagements



**T**he Lagos Chamber of Commerce and Industry (LCCI) plays a significant role in advocating for a conducive business environment in Nigeria. Established in 1888, LCCI is one of Africa's oldest and most influential Chambers of commerce. Every quarter,

**our advocacy** engagements are central to its mission of promoting trade and industry in Lagos and across Nigeria.

LCCI actively engages with the government at all levels to influence policies that affect businesses. It serves as a bridge between the private sector and the government, providing valuable insights and recommendations on issues such as taxation, trade policies, regulatory frameworks, and economic reforms. The Chamber regularly submits position papers, organizes stakeholder meetings, and participates in public hearings to ensure that the interests of businesses are considered in policy-making processes.



# 6

## Investment Conferences and Stakeholders Relations



L-R: Chairman, Power Sector, Lagos Chamber of Commerce and Industry (LCCI), Mr Martins Arogie; Senior Special Assistant to the Governor on Energy and Mineral Resources, Lagos State, Mr Adebayo Salako; National President, Women in Energy Oil and Gas (WEOG), Dr Oladunni Owo; President and Chairman of Council, LCCI, Mr Gabriel Idahosa, FCA; Hon Commissioner for Energy and Mineral Resources, Ondo State, Razaq Obe and Chairman, Membership Committee & Vice President, LCCI, Otunba Akinbo Akin-Olugbade during the Power Sector Seminar on Developing A sustainable State Energy Market at Commerce House, Victoria Island, Lagos on 25th July, 2024.

Some pictures showing a cross section of participants during the 2024 International Investment Conference (Invest Nigeria) at Eko Hotel & Suites, Lagos.



# 7

Regular Sectoral Group programmes,  
Seminars, Lectures, Business Visits, etc.



L-R: Deputy President, Lagos Chamber of Commerce and Industry (LCCI), Engr. Leye Kupoluyi; Past President, LCCI, Chief Dr. Mrs Nike Akande, CON; President and Chairman of Council, LCCI, Mr. Gabriel Idahosa, FCA; Special Adviser to the Minister of State, Health and Social Welfare, Dr 'Bayo Adedewe and Deputy President, LCCI, Mr Knut Ulvmoen, MFR during LCCI Members' Day tagged Connecting the Dots; held at Eko Hotel & Suites, Victoria Island, Lagos on 26th June, 2024

# OFFICERS OF THE CHAMBER



**MR. GABRIEL IDAHOSA, FCA**  
*President*



**ENGR. LEYE KUPOLUYI**  
*Deputy President*



**MR. KNUT ULVMOEN, MFR**  
*Deputy President*



**PRINCE ABIMBOLA OLASHORE, FCA**  
*Vice President*



**SIR LADI SMITH, FCA**  
*Vice President*



**MRS. OLAJUMOKE FASHANU, FCA**  
*Vice President*



**PRINCESS LAYO  
OKEOWO BAKARE**  
*Vice President*



**OTUNBA AKINBO  
AKIN-OLUGBADE**  
*Vice President*



**ENGR OPEYEMI AMINU**  
*Vice President*



**MRS. TOLA GBOGBOADE, FCA**  
*Treasurer*



**MR. GBENGA OLABIWONINU**  
*Deputy Treasurer*



**DR. CHINYERE ALMONA, FCA**  
*Director General*

# Our MANAGEMENT

At LCCI, we place premium value on our staff as change agents positioned to provide quality services to our numerous esteemed members.

This is to ensure that the Chamber remains a foremost role model for others in the delivery of sound business ethics and practice.

The Chamber prides itself in the array of quality professionals as members of staff at the Secretariat to deliver on the Chamber's Vision, Mission and Mandate.





# Management



**DR. CHINYERE ALMONA**  
*Director General*



**DR. SUNNIE OMEIZA-MICHAEL**  
*Director, Research & Advocacy*



**TEMITOPE AKINTUNDE**  
*Director, International and Public Sector Relations*



**ABOSEDE TENIOLA OKEYEMI**  
*Director, Membership Relations*



**DR. TAIWO NOLAS ALAUSA**  
*Director, Business Education Services and Training (BEST) Unit*



**TAYO ADEKUNLE**  
*Assistant Director, Programmes & Facilities*



**IRANLOWO OJURAYO**  
*General Manager, Human Resources*



**OJIWUSI ISAAC A.**  
*Assistant General Manager, Finance*



**MR. SOLA OLUWADARE**  
*Head, Trade Promotion*



**MAYOWA OSHO**  
*Head, Information Technology*



**SUNDAY OSANYINTUYI**  
*Head, Corporate Communications*



# Groups Sectoral

One of the major channels for value delivery is the Sectoral Groups, to which every member company is expected to belong. Companies are expected to join Sectoral Groups relevant to their areas of operations. There are twenty-six (26) Sectoral Groups in the Chamber.

These groups are:

1. Agro-Allied Group
2. Automobile & Allied Group
3. Construction and Engineering Services Group
4. Creative and Entertainment Group
5. Diaspora Business Group
6. E-Commerce Group
7. Education Group
8. Export Group
9. Financial Services Group
10. Freight Forwarding Agents group
11. Hotel and Tourism and Group
12. Industrial Group
13. Information Communication Technology and Telecommunication Group
14. Insurance Group
15. LCCI Women Group
16. LPG and Downstream Natural Gas Group
17. Medical, Pharmaceutical & Allied services Group
18. Mining & Solid Mineral Group
19. Oil Producers Trade Sector
20. Petroleum Contractor Trade section
21. Petroleum Downstream Group
22. Power Group
23. Printing & Publishing Group
24. Professional Practice Group
25. Real Estate Group
26. Small and Medium Enterprise/Distributive Group
27. Young Business Leaders Group

## AGRIC & AGRO ALLIED GROUP

The Agricultural Group draws its membership from the entire value chain in the sector, such as Livestock, Crops, Agro-allied processing, Capacity Building and Cooperative and Marketing. The group enjoys cordial relations with International and Multi-lateral organisations, government ministries and agencies that are in partnership with it to promote the interest of its teeming members.



## AUTOMOBILE & ALLIED GROUP

The Automobile and Allied Group comprises reputable companies in the Automobile industry. The Group serves as a voice that promotes the interest of all stakeholders in the sector. Its scope covers areas such as business development, business networking and regular engagement on Nigeria's auto policies.

## CONSTRUCTION & ENGINEERING GROUP:

This group draws its membership from the key players (Construction and Engineering Companies) in the engineering and construction sector. Representatives of Member-Companies in the group are Engineers, Architects, Civil Constructors, Town planners, Builders, Surveyors, etc. The growth witnessed in the construction industry has impacted positively on the group in recent years.





## CREATIVE & ENTERTAINMENT GROUP

The Group draws its membership from the key players in the three different industries within the Nigerian economy that are somewhat related (Creative, Entertainment & Sports). Its mandate is to promote and protect the interest of members in these industries. It focuses on business development, international networking and effective sectoral regulation.

## DIASPORA BUSINESS GROUP

The establishment of the Diaspora Business Group was born out of the recognition of the importance of offering a sense of belonging and community. The contribution of the African diaspora extends far beyond just remittances. It is a source of innovation, inspiration, and sustainable philanthropy.

Diasporans always play an essential role in the economic development of their country of origin. They also promote trade and foreign direct investment, create businesses, spur entrepreneurship, and transfer new knowledge and skills, making a significant impact. Being part of a Chamber can empower Diasporans, providing them with valuable networking opportunities, access to resources and support services, advocacy representation, market access, professional development, and enhanced visibility for their businesses.



## EDUCATION GROUP

The Group comprises operators from primary, secondary, tertiary and professional institutions in the country. It serves as a pressure group and advocacy mouthpiece for its members to ensure that government puts in place effective policies and right legislation that

can develop the sector. The group's scope covers areas such as business networking, advocacy, curriculum development and review, Educational Inclusion, Adult education, Early Childhood Education etc. The Group seeks to also protect the interest of its members.



## FINANCIAL SERVICES GROUP

The Group draws its membership from the key players in the financial services sector. Its mandate is to promote and protect the interest of members in the sector. It focuses on financial inclusion and regular engagement with the regulatory institutions of government such as CBN, NSE, SEC etc.

## FREIGHT FORWARDERS, LOGISTICS & ALLIED GROUP

Lagos is the main logistics hub in Nigeria on account of hosting the largest seaport and international airport in the country. Members of this Group, therefore, play a critical role in the economy. About 70%-90% of international business meant for Nigeria is routed through Lagos which is the economic and financial capital of the country. Majority of the key players in this sector are members of this Group. Membership cuts across Freight Forwarders, Shipping and Haulage/logistics companies and other players within the Maritime industry.



## HOTEL & TOURISM GROUP

Hotel, Tourism and Entertainment sector is one of the key growth sectors of the Nigerian economy. The group provides a platform for members to engage relevant authorities for the purpose of creating an enabling environment for its members. Major players in the sector are members of this group.



## INDUSTRIAL GROUP



The Industrial Group of the Chamber consists of key players in the manufacturing sector of the Nigerian economy. These include major global brands, indigenous manufacturing conglomerates and budding small and medium-scale companies operating in the sector. Since Lagos and its environs form the manufacturing hub of the country, a good proportion of companies operating in the sector are members of the Chamber. This is a very vibrant and dynamic Group which focuses on key drivers of industrial growth in Nigeria.

This is a broad-based group of players in the information, Communications and Telecommunications sector. Membership includes but not limited to Telecoms Operators, Computer hardware and software companies, Telecoms infrastructure companies, Online Retailers, I.T. Consultants and services providers to mention a few. This Group currently has a huge membership strength and still expanding.

## INFORMATION COMMUNICATIONS & TELECOMMUNICATIONS GROUP



## LCCI WOMEN GROUP



The Chamber is committed to gender mainstreaming and affirmative action for women. The women group comprises women entrepreneurs drawn from various sectors of the Nigeria economy. The group is driving the optimization of opportunities for women in business. It is also creating networking platforms for members of the group to interact with domestic and international institutions that promote gender equality.



The Insurance Group has membership which includes but is not limited to Underwriters, Brokers and Loss Adjusters. The Group seeks to increase the level of insurance penetration in the country and in the process, add value to its members while also protecting their interest through constructive engagement with relevant regulatory agencies and other industry stakeholders.

## INSURANCE GROUP



## LPG & DOWNSTREAM NATURAL GAS GROUP



Nigeria has massive untapped deposits of gas. Domestic and industrial gas usage is also on the increase. The LPG Group represents an aggregation of players in the downstream and upstream sub-sectors of the Oil and Gas industry. The Group is actively involved in promoting the use of cooking gas. It has distributed over 20,000 cylinders to Lagos residents through a partnership with the Lagos State Ministry of Energy and Mineral Resources. The advocacy, sensitization and awareness programs of the Group have had significant positive impacts on the sector.

## MEDICAL, PHARMACEUTICAL & ALLIED SERVICES GROUP:

The LCCI recognizes the crucial role of the Medical, Pharmaceutical & Allied Services in the development of human capital. The group offers a vibrant platform for engaging relevant stakeholders in the country on issues affecting operators in the sector.



## **MINING & SOLID MINERALS GROUP**



The Federal Government has embarked on a plan to diversify the Nigerian economy and one of the strategic areas of focus is the Mining and Solid Minerals sector. The Chamber recognizes the need for synergy between Government agencies of and private operators to unlock the value and opportunities in Mining and Solid Minerals. Consequently, this Group caters to the needs of operators in this sector with a view to giving operators a viable platform for engaging Government on the growth and development of the sector.

## **OIL PRODUCERS TRADE SECTOR (OPTS)**

This Group's membership is drawn from the key players in the upstream oil and gas sector. Members of the group comprise both local and foreign oil producing companies in Nigeria. The Group also seeks to protect the interest of its members via various advocacy initiatives.



## **PETROLEUM CONTRACTORS TRADE SECTION (PCTS)**



Its membership is drawn from companies operating in oilfield service and contracting capacities of the oil and gas industry. It strives to develop beneficial synergies among all stakeholders in the sector. Members of the group also operates in a non-profit capacity to provide benefits to the society as a socially responsible entity.

## PETROLEUM DOWNSTREAM GROUP

The Petroleum Downstream Group is involved in activities aimed at addressing critical issues affecting investments and operators in the downstream sector of the oil and gas industry. The membership of the Group cuts across the Major and Independent marketers as well as Oil servicing companies in the downstream sector. The Group also seeks to protect the interest of its members via various advocacy initiatives.



## POWER SECTOR GROUP (PSG)

The Power Sector Group is a platform for bringing together stakeholders in the power industry and discussing strategies for the growth of the sector in the overall interest of the nation. Membership of the PSG cuts across the entire value chain of the sector. Its stakeholders comprise the GENCOS, DISCOS and Alternative Energy companies amongst others. The private sector led power industry in Nigeria is at its infancy and promises to be the game changer for the economy. This Group aims to midwife the long-awaited economic development of Nigeria by powering all the sectors of the economy. The Group, through its programs, has been able to gain government's attention, recognition and intervention over the years.



## PROFESSIONAL PRACTICE GROUP (PPG)

The Group draws its membership from professional firms from all sectors of the Nigerian economy. These include Audit, Consulting, Accounting, Legal, Engineering and other professional firms in Nigeria. This Group historically has performed as the think tank of the Chamber giving birth to such ideas as the Chamber's International Arbitration Centre.



## PRINTING, PUBLISHING & ALLIED GROUP

The Group Comprises Key players and operators in the paper, pulp, printing, and publishing sector of the Nigerian economy. The objectives of the Group are business networking and advocacy towards creating an enabling business environment that impacts positively on the printing and publishing sector.



## SMALL & MEDIUM ENTERPRISES (SME) GROUP

The SME Group provides opportunities for its members through access to finance and information to grow their businesses. Members are educated and trained on subjects crucial to the success of their businesses. The Group provides platforms for members locally and globally for business opportunities and networking.

## REAL ESTATE GROUP

The Real Estate Group was created to provide Operators in that sector with a credible platform for further growth and development. It is a platform that provides Operators the opportunity to discuss industry challenges and how to proffer solutions to them.





## YOUNG BUSINESS LEADERS GROUP

The Lagos Chamber of Commerce and Industry Young Business Leaders Group (YBLG) is a vibrant community of enthusiastic and ambitious young entrepreneurs who are passionate about driving economic growth and innovation in Nigeria. This dynamic group is dedicated to fostering a spirit of entrepreneurship, creativity, and collaboration among its members, with the ultimate goal of shaping the future of business in Nigeria.

Through various initiatives, mentorship programs, and networking events, YBLG provides a platform for young entrepreneurs to connect,

learn, and grow. Our members are committed to making a positive impact in their industries and communities, and we are proud to support them on their journey to success.

Join us in empowering the next generation of business leaders and shaping the future of Nigeria's economy. Together, let's drive innovation, growth, and prosperity.



Executive Committee of the Young Business Leaders Group at their Inauguration.



# Members' Testimonials

1

Through my involvement with the Lagos Chamber of Commerce and Industry, I have gained access to top representatives of companies and organizations, which has significantly enhanced my ability to conduct business transactions and seize new opportunities. The Chamber can also help both established and new businesses grow substantially by leveraging its vast network of companies. I strongly advise companies looking to expand and explore new markets to consider joining the LCCI.

## Godwin Okoduwa

Head, LPG Sales and Marketing  
Falcon Corporation Limited

2

The Chamber is a great place for networking, it has connected me to great captains of industry (via the sectoral groups). I joined the Chamber in 2016 with less than 10 products. Today I have 47 products. To enjoy the Chamber, one must bring value and take advantage of every opportunity to network. To be taken seriously as a young person, one must be committed, disciplined and reliable. The Lagos Chamber of Commerce and Industry is gateway to success and greatness in the world.

## Princess Juliet Aboh

Chief Executive Officer,  
Just Jules

3

**Being a member of the Lagos Chamber of Commerce and Industry (LCCI) it has been highly beneficial to my business in several ways:**

- 1. Networking Opportunities:** LCCI has provided access to a wide network of businesses. Also, it has helped me in meeting partners, leading to new business opportunities and collaborations.
- 2. Access to Information:** Being a member has helped me to receive timely and valuable information about market trends, economic developments and regulatory changes, helping my business to stay informed and to make strategic decisions.
- 3. Training and Capacity Building:** LCCI has offered me various training programs, workshops, and seminars that helped in enhancing the skills and knowledge of my business and my staff.

## Olufunmilayo Oduwaye

Managing Consultant  
Tee- Eff Associates

# Trade PROMOTION

The Trade Promotion Department is responsible for managing the trade promotion activities of the Chamber. These include Trade Fairs and exhibitions. The Lagos International Trade Fair is the flagship programme of the department.



# Lagos International Trade Fair



Some of the scenes of previous editions of the Lagos International Trade Fair held at the Tafawa Balewa Square, Lagos.

# Benefits of LCCI Membership



Membership of the LCCI offers robust and diverse opportunities for new business ideas and investment growth. These benefits include:

1. **Networking Opportunities:**

- Increase in Network and Contacts
- Member's referral Service
- LCCI Partnership with other business organisations



2. **Reduced cost of doing business through access to:**

- Current business information.
- Training and workshops relevant to the needs of organisations.
- Business consulting services.
- Increase in global outreach through membership directory
- Advertisement in the LCCI Newsletter and on the LCCI website: [www.lagoschamber.com](http://www.lagoschamber.com)



## Qualification:

The Company must be duly registered to carry out business in Nigeria.

## Procedure of Registration

- i. Pick up an application form at our Victoria Island Office or online via [www.lagoschamber.com](http://www.lagoschamber.com)

For application to be valid, prospective members should be sponsored by one financial member of LCCI.

- iii. A certified Bank Cheque for the Entrance, Subscription and Development Levy should accompany the completed Application Form. The Bank Cheque should be drawn in favour of the Lagos Chamber of Commerce and Industry. Payment made would be refunded if application is unsuccessful.
- iv. Completed Application Form, together with the Bank check for payment and the Company's Certificate of Incorporation/Registration should be returned to the Director General.

- ii. Payment details are as follows:

### Annual Subscription:

CATEGORY	CATEGORIES OF MEMBERSHIP				Please, tick appropriate box using "X"
	Entrance Fee	Development Fee	Annual Subscription	Total Fees	
PREMIUM	-	-	-	N2,000,000	
A - DIAMOND	N75,000	N140,000	N300,000	N515,000	
B - GOLD	N50,000	N70,000	N200,000	N320,000	
C - SILVER	N30,000	N30,000	N100,000	N160,000	
LCCI ALUMNI	-	-	N40,000	N40,000	

## DIASPORA MEMBERSHIP

Annual  
Subscription  
\$750

**Account name:**  
THE LAGOS CHAMBER OF  
COMMERCE & INDUSTRY  
**Bank Name:**  
UNITED BANK FOR AFRICA PLC,  
NIGERIA  
**Account Number:**  
(Dollar) 3002674079  
**Bank Sort Code:** 033154282  
**Bank Swift Code:** UNAFNGLA

1

**Account name:** THE LAGOS  
CHAMBER OF COMMERCE &  
INDUSTRY  
**Bank Name:** FIRST BANK OF  
NIGERIA  
**Account number:** 2007760202

2

**Account name:** THE LAGOS  
CHAMBER OF COMMERCE &  
INDUSTRY  
**Bank Name:** ACCESS BANK  
**Account Number:** 0030338399

The above listed fees are subject to change from time to time at the discretion of the Chamber.



For more information, contact

### Membership Department

Tel: +234 818 878 3081, +234 8092931081

Email: [membership@lagoschamber.com](mailto:membership@lagoschamber.com) | Website: [www.lagoschamber.com](http://www.lagoschamber.com)



# 2024 LAGOS INTERNATIONAL TRADE FAIR

*...connecting businesses, creating value*



**FRI. 1ST - SUN. 10TH  
NOVEMBER, 2024**



**TAFAWA BALEWA SQUARE,  
LAGOS, NIGERIA**



**8:00AM-6:00PM DAILY**

***For participation:***



**07005246724**



**[litf@lagoschamber.com](mailto:litf@lagoschamber.com),  
[www.lagosinternationaltradefair.com](http://www.lagosinternationaltradefair.com)**



# Rent a Tent



Make Your Event

# Merrier

**FOR TENT, CONTACT**

**TEMITAYO: 08187913631, SEUN: 08023530054**



**RENT A SOPHISTICATED HALL AND OFFICE SPACE AT  
IKEJA AND VICTORIA ISLAND**

**FOR HALL, CONTACT**

**DOTUN: 09031371871, PRISCA 08131978357**





Commerce House 1st Floor  
1, Idowu Taylor Street, Victoria Island, Lagos, Nigeria

: 08188783081

: [lcci@lagoschamber.com](mailto:lcci@lagoschamber.com) | Web: [www.lagoschamber.com](http://www.lagoschamber.com)

: [twitter.com/lagoschamber1](https://twitter.com/lagoschamber1) : [facebook.com/lagoschamber](https://facebook.com/lagoschamber)

: [www.linkedin.com/company/lagos-chamber-of-commerce-and-industry](https://www.linkedin.com/company/lagos-chamber-of-commerce-and-industry)

: [google.com/+Lagoschamber](https://google.com/+Lagoschamber) : [lagos chamber of commerce and industry](https://lagos-chamber-of-commerce-and-industry)