



# India Pavilion at **BAUMA 2025** 7 – 13 April 2025, **Munich, Germany**



**Participate through EPC India and enjoy substantial savings!**

## About the Exhibition

34th Edition of the World's Leading Trade Fair for Construction Machinery, Building Material Machines, Mining Machines, Construction Vehicles and Construction is going to be held from 7 – 13 April 2025. BAUMA offers a unique chance to meet with customers from around the world. From the digital construction site to alternative drives and tomorrow's construction methods, the most important topics will be discussed and innovative solutions will be presented. BAUMA has moved the global construction, building materials and mining industries. The interplay of international enterprises, renowned experts and a well-versed audience at Munich's trade fair center again provided impulses for the future. This would be a unique platform for both industry leaders and SMEs to expand their reach into the growing European Construction industry.

## Mining at BAUMA 2025

In 2025, bauma Mining will once again be the hub of the international mining industry. Exhibitors will show the latest innovations and provide insight into the current trends and topics of the mining sector. The topics in bauma Mining cover a broad range: from financing projects, occupational safety, digitalization and automation to technical equipment for the development, the mining process and the renaturation of open-pit mines.

## About BAUMA 2022

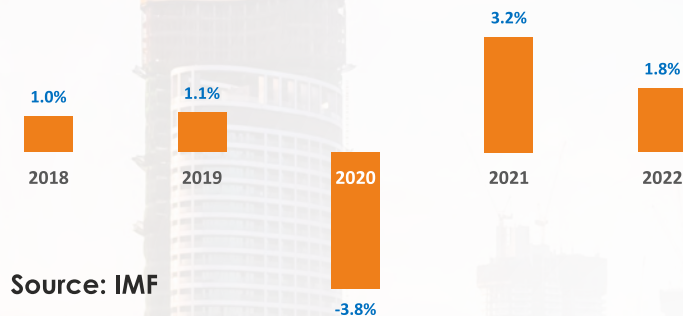
A total of around 3,200 exhibitors from 60 countries and more than 495,000 visitors from over 200 countries came to Munich for the world's leading trade fair for construction machinery, building material machines, mining machines, construction vehicles and construction equipment. The proportion of international visitors was around 50 percent.



## Economic Scenario of Germany

Germany is not only one of the leading and highly developed social market economies of the world, it leads the multilateral efforts to promote a stable global economy and encourage the use of renewable resources and environmental friendly production. It is the largest economy of Europe and fifth largest of the world in the world in terms of Purchasing Power parity (PPP). Its highly skilled labour force, continuous advancement in technology and well thought out development planning has made it one of the leading developed economies of the world. Real GDP growth however slowed down to 0.5% in 2019 and then contracted by 4.9% in 2020 due to the Pandemic effect but domestic consumption, investment, and exports have driven German GDP growth to 2.7% in 2021 but then dropped by 1.8% due to slowdown in Europe as a whole. Export growth may recover through 2023 due to easing of supply chain bottlenecks and a record-high order backlog. The economy is projected to contract by 0.5% in 2023 and recover by 0.9% in 2024 as per IMF.

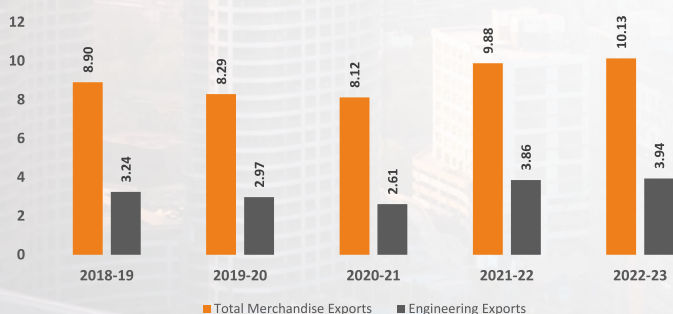
### Real GDP Growth rate of Germany (2018 to 2022)



## Bilateral Trade between India and Germany

Germany is the third largest destination for India's engineering exports and the largest in European Union. Engineering exports to Germany reached its all-time high at USD 3.86 billion in 2021-22 and then again to USD 3.94% in 2022-23 registering a substantial 48% growth in 2021-22 and 2.1% growth in 2022-23 over the previous fiscals. During the ongoing fiscal 2023-24, engineering exports to Germany continued to be optimistic with USD 2.69 billion of exports during Apr-Nov 2023-24 as against USD 2.55 billion during the same period last fiscal, registering 6.1% growth. It is quite impressive as well as encouraging that when engineering exports to EU has declined in 2022-23 and also during April-Nov 2023-24, engineering exports to Germany has been rising continuously. India's major engineering exports to Germany include Electric Machinery and Equipment, Iron and steel and its articles, Auto Components/Parts and Industrial Machinery among others

### India's Merchandise and Engineering exports to Germany (USD Bn.)



Source: DGCI&S

### Focus Product

Construction and mining machinery are the focus products of this event. India's exports of Construction Machinery to Germany recorded nearly 3% CAGR between 2018-19 and 2022-23 to reach USD 64.3 million in 2022-23. Main products including Parts of machines- cranes, derricks, tower cranes, road rollers, winches, etc. components and parts comprises around more than 70% of India's total exports of Construction Machinery to Germany. Moreover, the current fiscal saw growth in exports of Construction Machinery to Germany till the month of Nov 2023 on a year-on-year basis. Exports of total construction machinery jumped by 2.6% to reach USD 42.08 million during Apr-Nov 2023-24 from USD 41.02 million during the same period last fiscal, which is really encouraging for the EEPC India member exporters participating in this event.



## Opportunity for Indian Engineering Industry

The investment volume in certified green buildings has remained very high in Germany during last calendar year. The German commercial construction green market is highly competitive. The market opens opportunities for small and medium players with increasing Government investments in the industry. In Germany construction equipment market, the earthmoving construction equipment segment accounted for the largest market share. The country is one of the most attractive logistics markets in the world due to its central location in Europe. The development of warehouses in Germany is expected to drive the demand for forklifts and telehandlers in the Germany construction equipment market. In this regard, the Indian industry has great potential for Germany especially in the areas of manufacturing, infrastructure and energy which are major growth sectors in India and such events are real good platforms for expanding businesses by Indian industry makers.

### Product Profile

#### ► Construction & Commercial Vehicles

- Dumper vehicles / Dump trucks
- Construction vehicles, all-terrain
- Tractor units
- Semitrailer Trucks & Other trailers for construction and commercial vehicles
- Truck chassis for special bodies

#### ► Construction Machinery & Attachments

- Excavators/ Loaders/ Graders/ Scrapers
- Attachments for construction machines
- Track-laying machines
- Cable-laying machines
- Pipeline and cable detectors
- Pipe layers

#### ► Material Handlers & Attachments

#### ► Special Machines for Road Construction, Maintenance & Repair

- Road pavers
- Concrete road pavers
- Asphalt pavers
- Road milling/cold milling machines
- Road-marking machines

#### ► Drilling

- Drilling grabs
- Hand held drill hammers
- Hydraulic & Pneumatic Hammers
- Drilling rigs & equipments

#### ► Lifting appliance, Industrial trucks & solutions

- Mobile/ Tower/ Fixed bridge cranes
- Attachments for cranes
- Construction hoists
- Hoists and winches
- Pulleys, electric hoists
- Transport platforms
- Forklifts

#### ► Construction Equipment & Special Systems

- Saws
- Milling and grinding machines
- Stone cutting machines
- Surveying equipment, surveying technology for the construction site
- Diamond tools
- Welding sets and accessories
- Compressors
- Wheelbarrows, construction ladders

#### ► Concrete/ Mortar preparation & processing

- Concrete Pumps
- Mixing and grouting equipment
- Truck mixer for ready-mixed concrete

#### ► Construction Site Installation

#### ► Tunnel Construction Machines, Equipment & Accessories

#### ► Mining, extraction & processing of raw materials

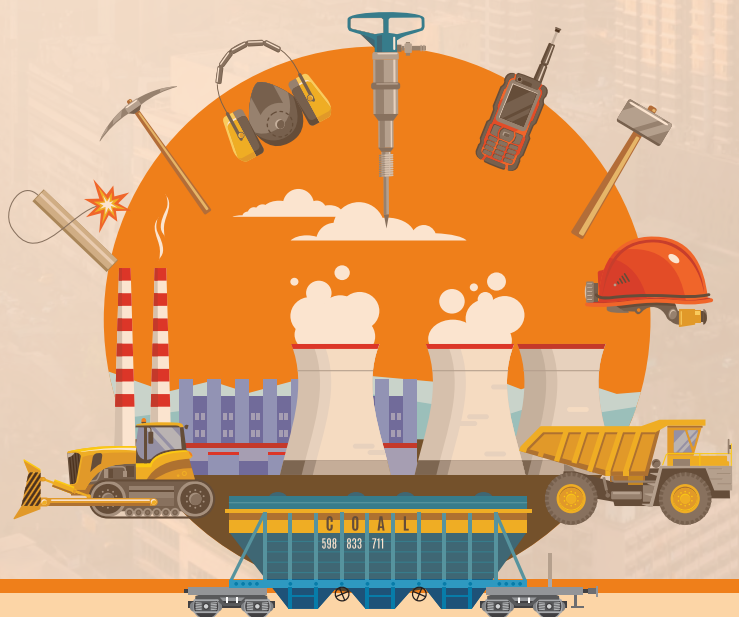
- Machines for mining and extraction of raw materials
- Handling of raw materials
- Mineral processing

#### ► Building Material Production

- Machines and plants for the production of cement, lime, gypsum-bound building materials
- Machines and plants for producing asphalt
- Machines and plants for the production of concrete, concrete products and precast parts

#### ► Components & Service Suppliers

- Powertrain engineering, fluid technology, power generation units
- Accessories and wear parts
- Services test, measurement and process control technology
- Communication and navigation, Job safety





## Venue:

Messe München, **Munich, Germany**

## Date& Time:

7 – 13 April 2025

## Participation Charges:

### •Booth Size: 9 Sqm

One Side Open (Built up Booth): INR 60000 per sqm

Other Services : INR 2500 per sqm

Corner Charges : INR 6,250 per Sqm

### •Booth Size: 12 Sqm and Above

One Side Open (Built up Booth): INR 59000 per sqm

Other Services : INR 2500 per sqm

Corner Charges : INR 6,150 per Sqm

## Note:

The amount of INR 60,000/INR 59,000 + INR 2,500 per Sqm would be treated as deposit against Participation charges till receipt of Government decision in this regard. On getting Government approval for EEPC India's proposal, the said sum will be adjusted against participation charges. After receipt of Government sanction, the difference between such deposit and subsidized participation charges would be refunded.

## Note:

- 1.EEPC India reserves the right to reject an application for participation without assigning any reason.
- 2.In case of not receiving a minimum number of participants, EEPC India may decide not to participate in the show.
- 3.No subletting or sharing of space/ booth is permitted.

- No applicant can avail subsidised rate if in same event, the applicant (exhibitor) has already participated three times.
- No applicant can avail subsidised rate if the applicant (exhibitor) has already participated in three MAI aided events in the current financial year.

## Re-imbursement of Airfare

In case of receipt of specific MAI approval for re-imbursement of airfare, upto INR 90,000 may be re-imbursed to eligible participants. The T&C must be abided by for eligibility towards such re-imbursement. For detailed guidelines please click the following link:

**Guidelines for Reimbursement of Airfare**



**Note:** EEPC INDIA can only recommend for issuance of VISA to the extent that the concerned person is a participant at the subject exhibition and that the person in question has been certified by the participating organisation to be their representative. The Foreign Embassy/ Consulate where the applicant submits the VISA application is expected to follow their usual procedural checks before granting the VISA in question and EEPC INDIA shall not be responsible in any manner whatsoever for non-issuance of VISA by the concerned authorities. This would mean that the prospective participant will be fully liable for the total charges payable to EEPC INDIA even if they do not obtain the VISA for any reason whatsoever.



## Mode of Payment

- Please pay online through the following Payment Gateway :  
**HDFC/PayU**

OR

- Pay through RTGS/NEFT in INR as per the following details :

**Name of the Bank :** HDFC BANK LTD  
**Branch :** Central Plaza  
**Address of Bank :** 2/6, Sarat Bose Road, Kolkata 700 020  
**Account Number :** 00142090000452  
**Account Name :** EEPC INDIA  
**NEFT Code :** HDFC0000014

- Demand draft favoring “EEPC INDIA” along with the duly filled-up Application Form
- **UPI ID:** eeplindiaacpromotion.76041638@hdfcbank

## Booth Display

**Participation charges for a 9 sqm. booth includes the following services:**

- One Table
- One Info Counter- Lockable
- Three Chairs
- One Electrical Socket
- Three spot lights
- Carpet
- Fascia Name
- One Waste paper bin



## Submission of application

Interested members are requested to fill in the online Application Form latest by **29 November 2024** at the following link:

**Click for Application Form**

Please go through the **"Mode of Payment"** section of this Circular for payment details.

## Selection criteria

Since limited space is available, selection of participation will be done strictly on first-come, first-served basis.

## Cancellation of participation

Please note that no request for cancellation and/ or refund including of advances, if any and/ or adjustment thereof shall be accepted for any reason whatsoever. Once the application form and/ or advance/ part payments are accepted by EEPC India the participant remains liable to pay in entirety the amounts due from them on account of the event. In case members are not able to travel due to travel restrictions/advisory by Government of India or Germany then the amount paid will be adjusted toward the participation in the next edition.

## Force Majeure:

If a Force Majeure Event like war, act of God, natural calamities, governmental directives, civil commotion, epidemic, pandemic, etc. or alike events occurs inasmuch as that the fair authorities/ organizers consider that it is illegal, impossible, inadvisable or impracticable for the physical, onsite and in-person (i.e. 'live') elements of the Event to be staged, then in such situation and/ or circumstances the decision of the fair authorities shall be final and binding upon EEPC India and all its co-exhibitors/ participants. In such situation and/ or circumstances, if the fair authorities, organizers or the vendors appointed for providing diverse services related to the Event in question does not refund the monies paid by EEPC India and/ or does not otherwise absolve EEPC India from its contractual obligations then in such case the Co-exhibitors / participants remain liable to pay to EEPC India the contracted participation charge in full and shall not receive any refund from EEPC India of the amounts paid by the co-exhibitors/ participants. Further, if the fair authorities, organizers or the vendors, so appointed for the Event binds or rolls over EEPC India's participation in the future editions of the same Event in question, then automatically the participation of the co-exhibitor/ participant shall also be carried forward to such future editions of the Event and the amounts paid by them shall be given a credit for the successive edition. However, if there is any increment in the participation fees fixed by the fair authorities, organizers or in any other charges, budgets, etc. then such increased amount has to be paid by the co-exhibitor/ participant without any demur based on the space and booth booked by the co-exhibitor/ participant. In any event, a co-exhibitor/ participant cannot decrease the space or the booth size booked by them for the originally scheduled Event.

**Note:** Regarding goods taken out of India for exhibition or on consignment basis for export promotion, participants may refer to Circular No. 108/27/2019-GST dated 18.07.2019 of the Central Board of Indirect Taxes and Customs (CBIC) which is the statute in the matter.

**Contact Details** 

**[www.eepcindia.org](http://www.eepcindia.org)**

**CIN: U51900WB1955NPL022644**